



CHILDCARE AND DEVELOPMENT CENTRE

December
2017



Fundraiser

Holiday Hours

Inclement
Weather



Christmas
Concert

Fee Changes

Sick Policy

Yoga

Dance

More & more
news!



Happy Holidays Happy Holidays



All the staff at Kinder Buddies would like to wish all our families a safe and wonderful holiday season.



THANK YOU!!

Thank you to everyone who contributed and made our Terra Cotta Cookie Fundraiser a success...

We raised over **\$3,300.00** in total!!!

Congratulations to Toddler 1 who sold over **\$1100.00** worth of cookie orders.

Pizza party will be provided to 2 classrooms tomorrow, Friday Dec 1st; Toddler 1 & Preschool 2!!

And for our Movie Tickets winner...

Special congratulations to Mackenzie & Preston, The Wong family in our Pre-school Room 2 & Toddler 1 for selling over **\$900.00** worth of cookies making them the most family to have sold!

All orders must be picked up at the Centre on Wednesday, December 6th starting from **3:00 pm.** and before closing.



Centre Holiday Hours:

Monday, Dec 25th

Centre Closed – Christmas Day

Tuesday, Dec 26th

Centre Closed – Boxing Day

Friday, Dec 29th

Centre closes @ 4pm for New Years Eve

Monday, January 1st, 2018

Centre Closed - New Year's Day



Holiday

CONCERT

Once again, our Holiday Concerts will be held in your child's classroom. The children and staff have been working very hard on their performances for you. After the concert, we will have refreshments, snacks, and ample time for mingling.

Infant, Toddler1 & Toddler2

A warm welcome to..

♥ *The Belan Family*

Centre Theme

Our Centre Theme Day will be:

On December 15th

"Santa Hat Day or Christmas Jumper Day"





CHILDCARE AND DEVELOPMENT CENTRE

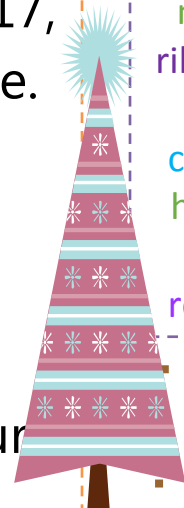


Fee Changes:

As of January 8th, 2017, our fees will increase.

On this first withdrawal, your account will be debited a new bi-weekly fee plus your new deposit difference.

All fees will resume at your bi-weekly fee as of January 22nd. An invoice will be e-mailed to you stating all the changes in your fees.



Loose End Materials:
To enhance our program, we are looking for natural loose end materials that we can incorporate into our class. Below is a list of items that would be greatly appreciated.

Colored scarves, empty spice containers, shells, fabric swatches, hair rollers, prisms, buttons, wood scraps, plastic cups, curtain rings, keys, cones, muffin tins, tiles, wrapping paper, old magazines, ribbon, ice cube trays, flags, squirt bottles, nuts and bolts, lollipop sticks, painter's tape, empty film canisters, bubble wrap, old gadgets (irons, phones hair dryers with cord cut off) flower pots, children shoes for dress-up, bangles, bread clips, paint rollers, pots and pans, old CD's & sample swatches.



Tel Pay Schedule

Dec 11th

Dec 25th (Friday Dec 22nd)

Jan 8th, 2018

Jan 22nd

Feb 5^h

**Christmas Food Drive
December 11th - 22st, 2017**





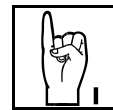
CHILDCARE AND DEVELOPMENT CENTRE



Yoga every other Tuesday!



Ms. Francesca is ready to refine all our Preschoolers Yoga skills. Yoga will take place every second Tuesday commencing January 23rd
Preschool 2 ~ 10:00
Preschool 1 ~ 10:30



Sign Language every other Monday!

Ms. Christina will be teaching another fun year of sign language. Classes will start March or April

Toddler 1 ~ 9:30

Toddler 2 ~ 10:00

Preschool 1 ~ 10:30

Preschool 2 ~ 11:00

French Class every Friday!!

French Classes schedule as below:

Preschool 2: 10:00-10:30

Preschool 1: 10:30-11:00

Music Class every other Wednesdays!!

Schedule as below:

Toddler 1: 9:15 -9:45

Toddler 2: 9:45 -10:15

Preschool 1: 10:15-10:45

Preschool 2: 10:45-11:15



Developmental Checklist

It's that time of year again!

The office will be e-mailing Developmental reports week of January 22nd for preschool classrooms. Parent-teacher interviews may also be scheduled if you would like to meet with your child's teacher to discuss their progress or voice any concerns you may have.

Please schedule these interviews with Ms Archana.

Dance Class every other Thursday starts February 8th schedule as below:

Toddler 1: 9:15 -9:45

Toddler 2: 9:45 -10:15

Preschool 1: 10:15-10:45

Preschool 2: 10:45-11:15

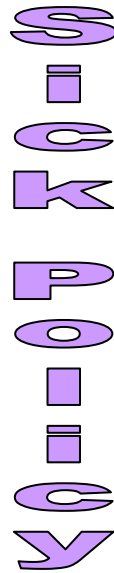




Child May **Not Attend** with the following conditions:

- Escalating Fever above 38C or 101F
- Active Diarrhea OR Vomiting- 2bouts (exclusion of 24 hours after the last bout)
- Pink eye – Conjunctivitis (Until 24 hours of treatment)
- Undiagnosed Rash
- Whooping Cough – Pertussis
- H1N1
- Head Lice (Until treated and all nits removed)

Continued...



- Chicken pox (5 days or until all sores have been scabbed over)
- Ringworm
- Rubella – German Measles
- Scabies
- Strep Throat
- Tuberculosis
- Hepatitis A
- Impetigo
- Measles
- Mumps

Inclement Weather...

We may need to close our doors for care just as the local schools do, due to inclement weather. If a decision is made to close the school before the school has opened for operations, this decision will be made by 6:30am. The centre director will record a message on the school telephone service stating that the centre will be closed and the date that the closure applies to. It is your responsibility to phone the school to become aware of any closures.

If a decision is made to close the school while school is in session, this decision will be made by 12:00pm. In this case, you will be notified of the closure and pick-up arrangements will have to be made.

Parents will be responsible for their children's regular fees for up to 2 consecutive days of closure. If the centre is closed for more than 2 consecutive days, your fees will be ceased until the school re-opens

